

# ANNUAL REPORT

# SCAPPOOSE RURAL FIRE PROTECTION DISTRICT



2021

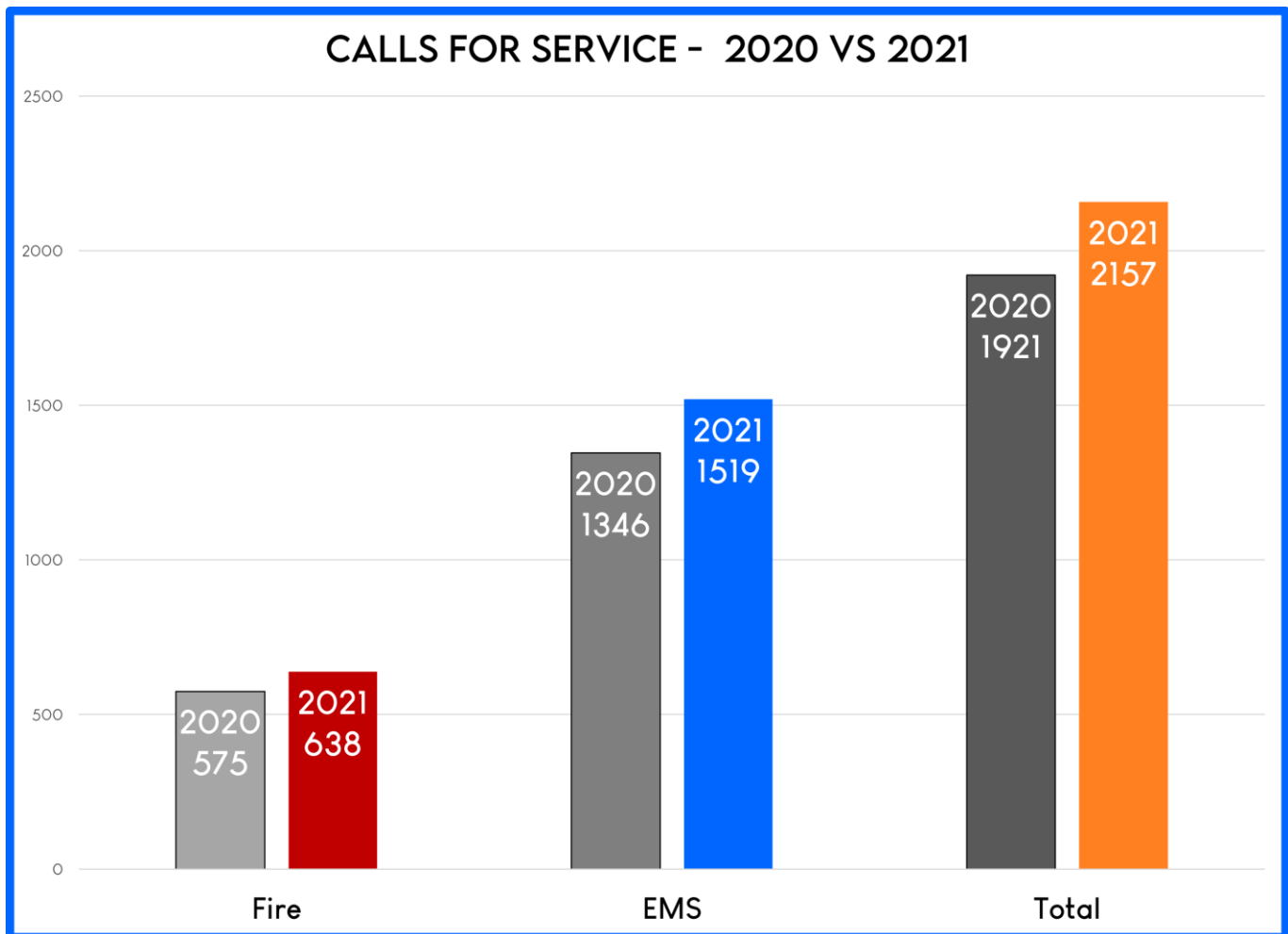
# OPERATIONS

Total Fire & EMS calls for service during the year 2021 was **2,157**, involving a total of **4,364** apparatus responses spending **2,780** hours and **24** minutes of time. The call volume increased **12.29%** in 2021 over the previous year. The 75<sup>th</sup> percentile response time for first arriving units, on **1,137** emergency incidents that occurred in 2021 was **7 minutes 44 seconds**.

During 2021, the ratio of EMS incidents to Fire incidents was **70%** to **30%**, respectively. Total EMS related calls were **1,519**, with **1,651** patients treated. COVID-19 was suspected or confirmed in **93** patients. Fire related calls totaled **638** during 2021.

Overlapping incidents (at least one other call in progress) amounted to **900**, representing approximately **42%** of the total call volume of **2,157** incidents. This may require units to respond to areas outside their base districts, which results in increased response times as well as depleted available resources to respond to other emergencies.

For the year, SRFD averaged **1.75** fire calls per day and **4.16** EMS calls per day for an overall daily average of **5.91** calls per day.

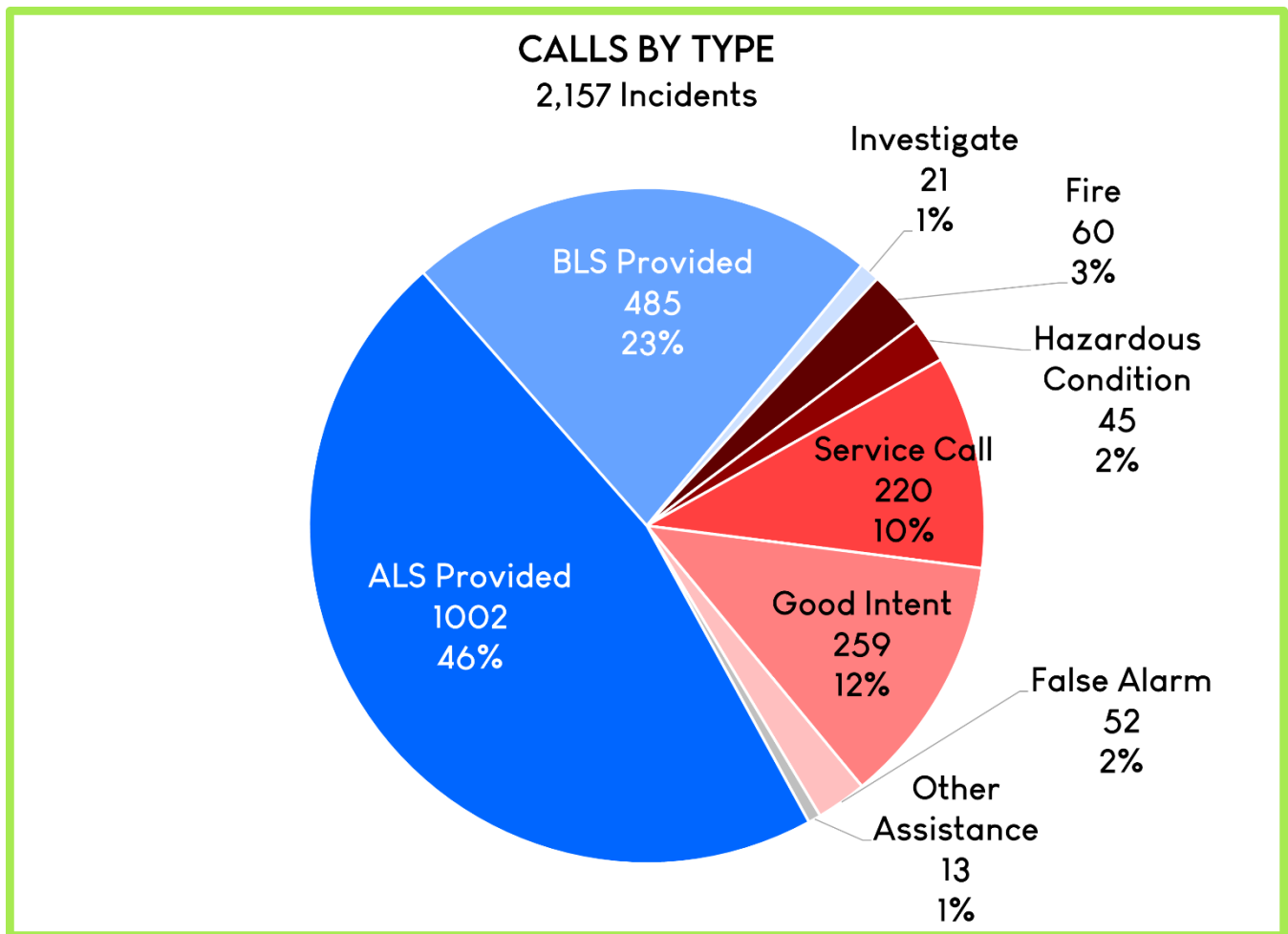


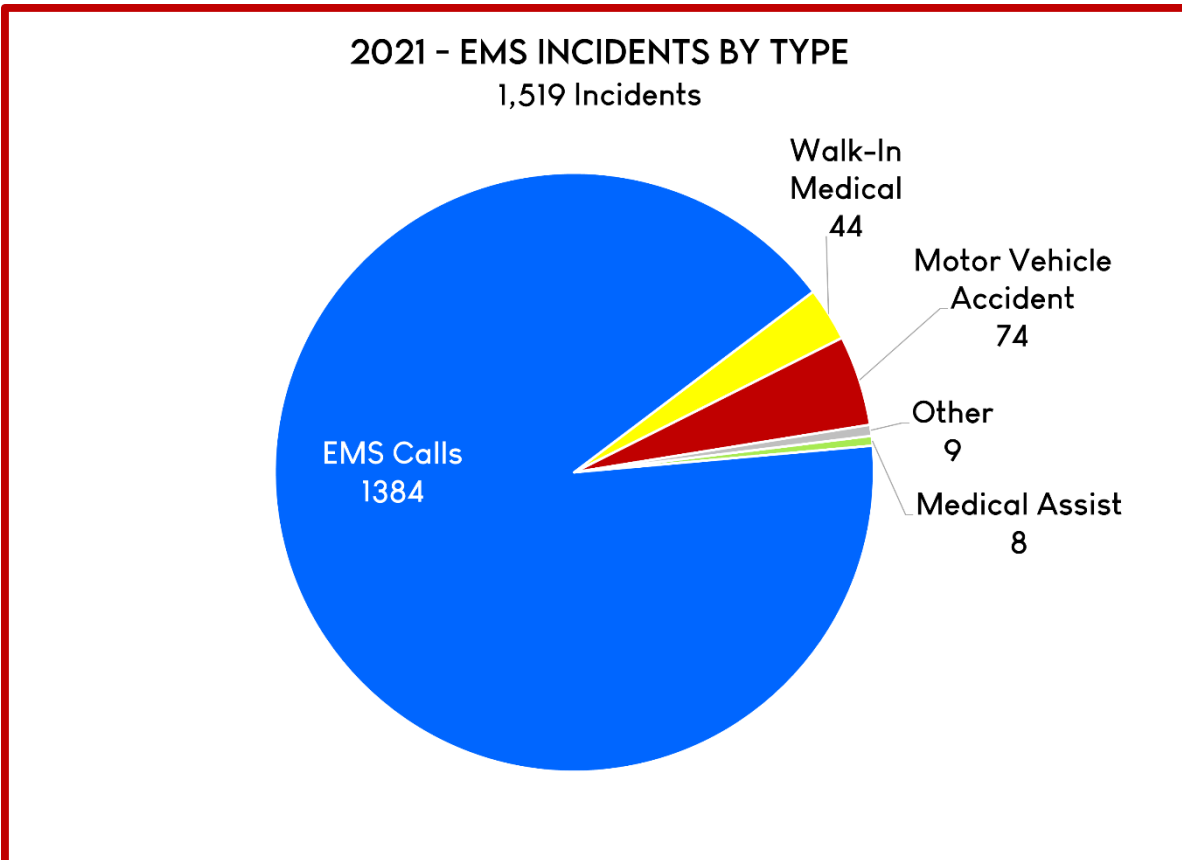
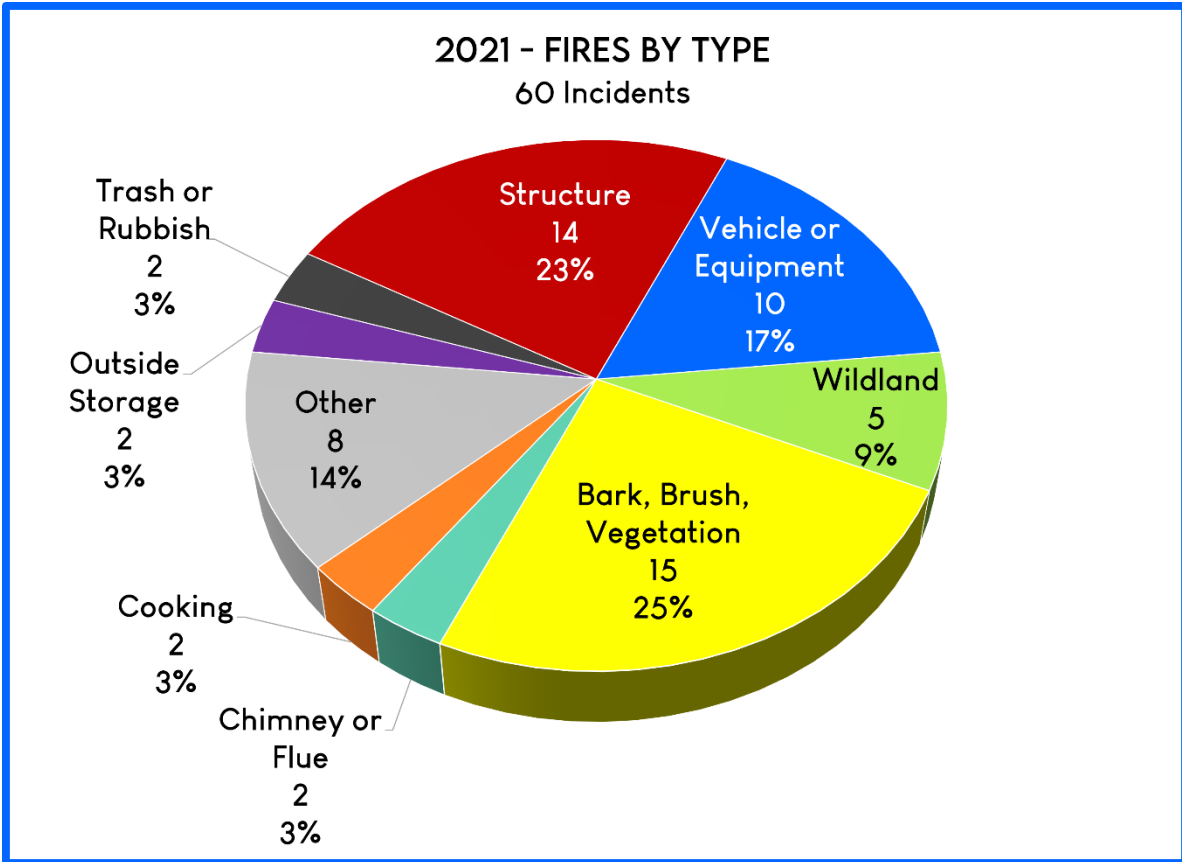
# OPERATIONS

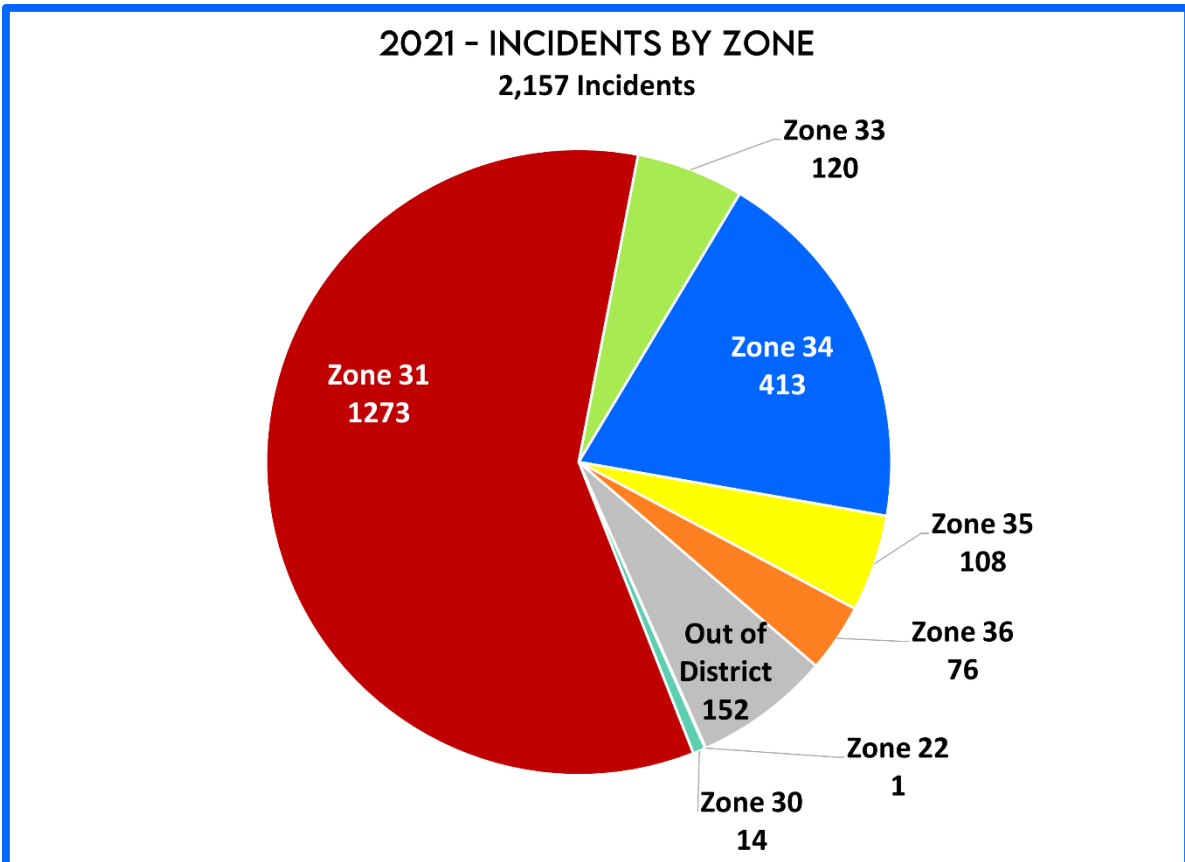
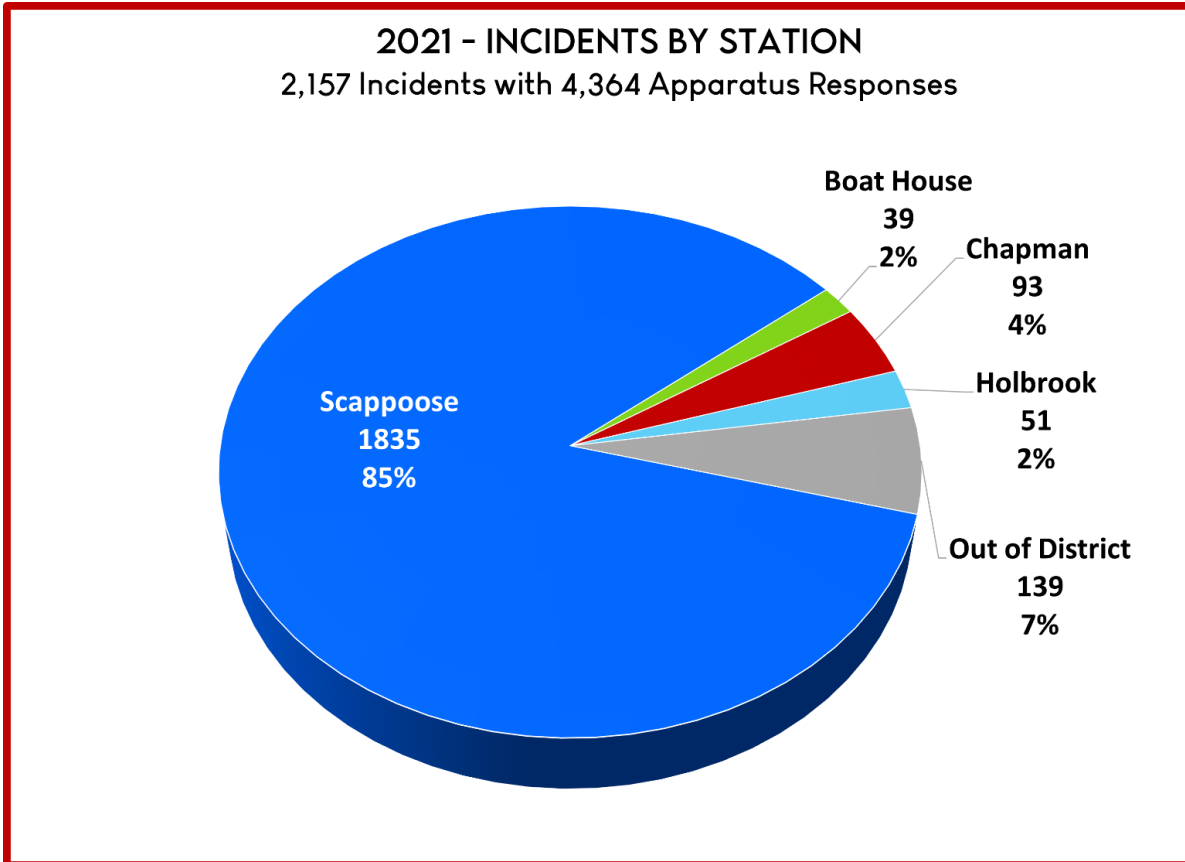
## FIRE AND EMS CALL BREAKDOWN BY PRIMARY ACTION 2021

Fires	60
Hazardous Condition	45
Service Call	220
Good Intent	259
False Alarm	52
Other Assistance	2
<b>FIRE CALLS TOTAL</b>	<b>638</b>

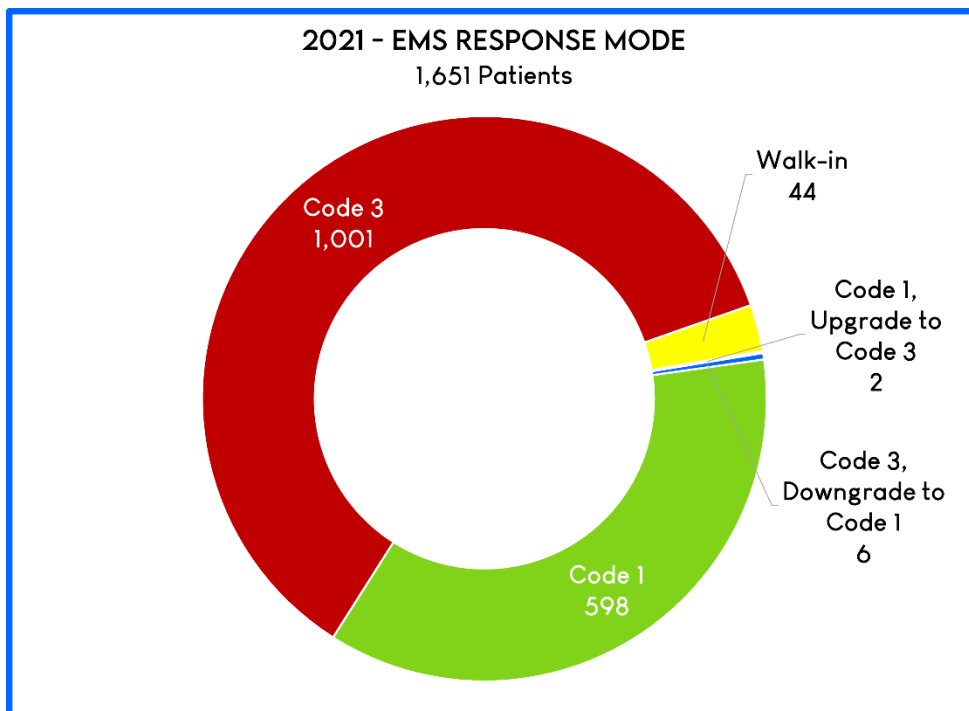
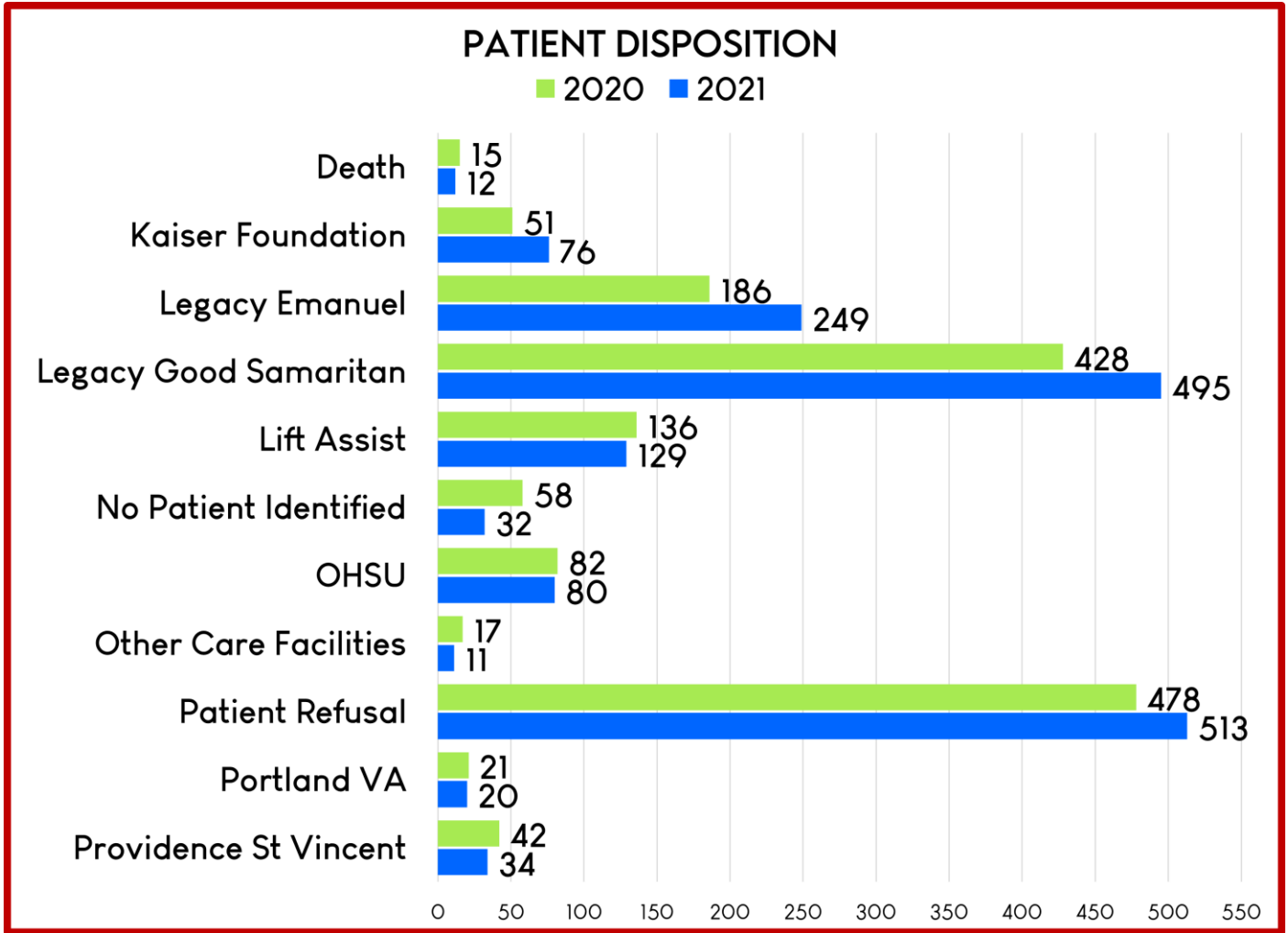
ALS Provided	1002
BLS Provided	485
Investigate	21
Other Assistance	11
<b>EMS CALLS TOTAL</b>	<b>1,519</b>

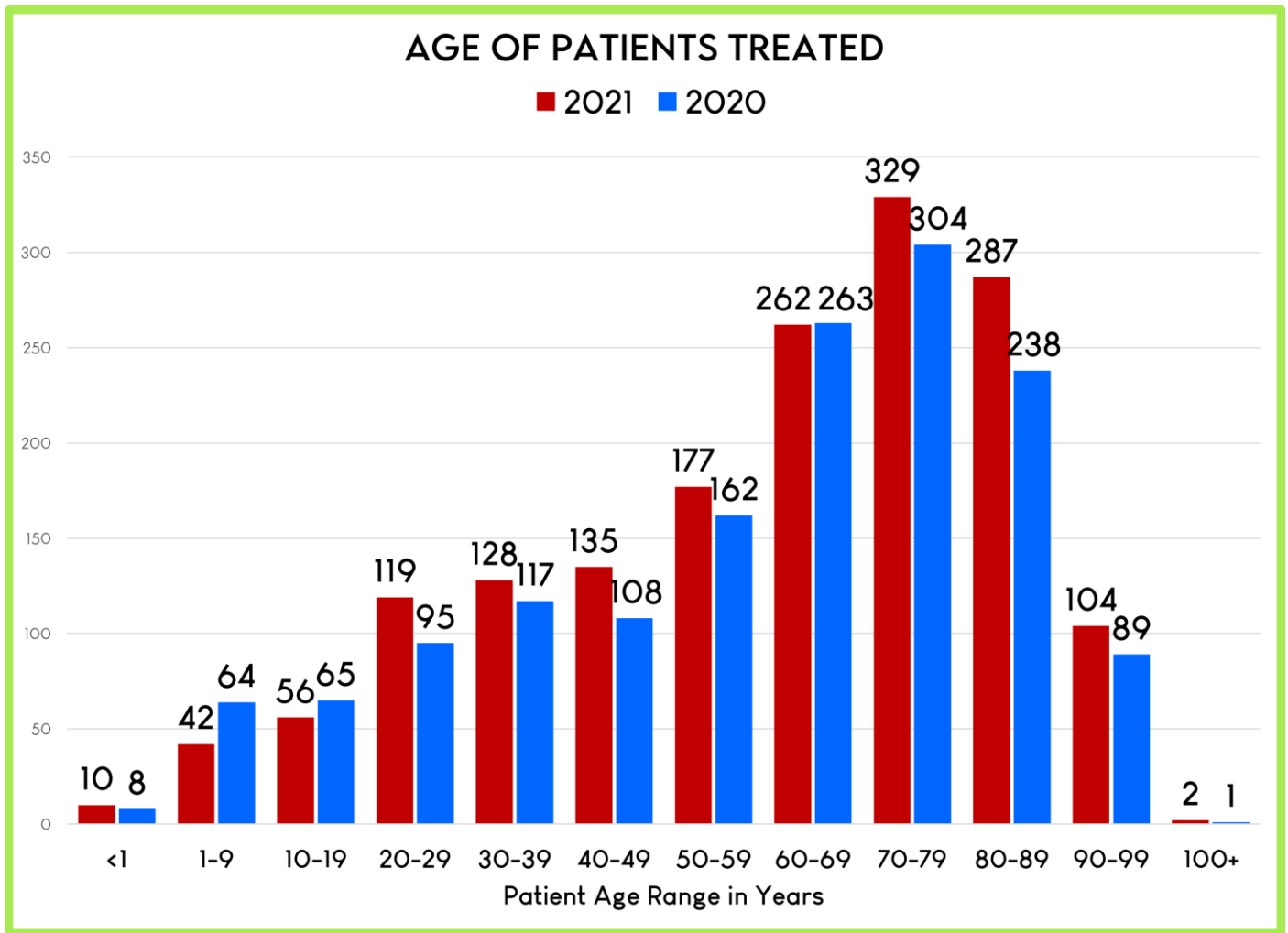


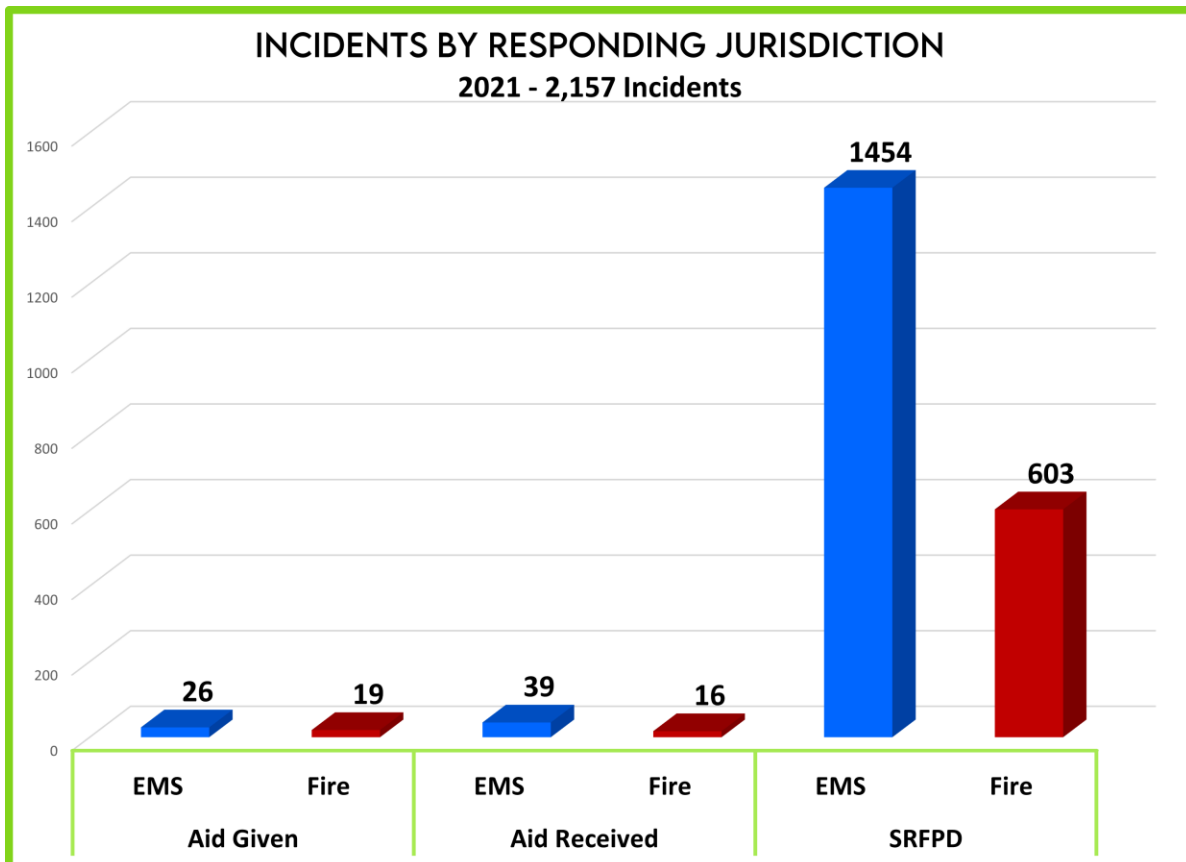
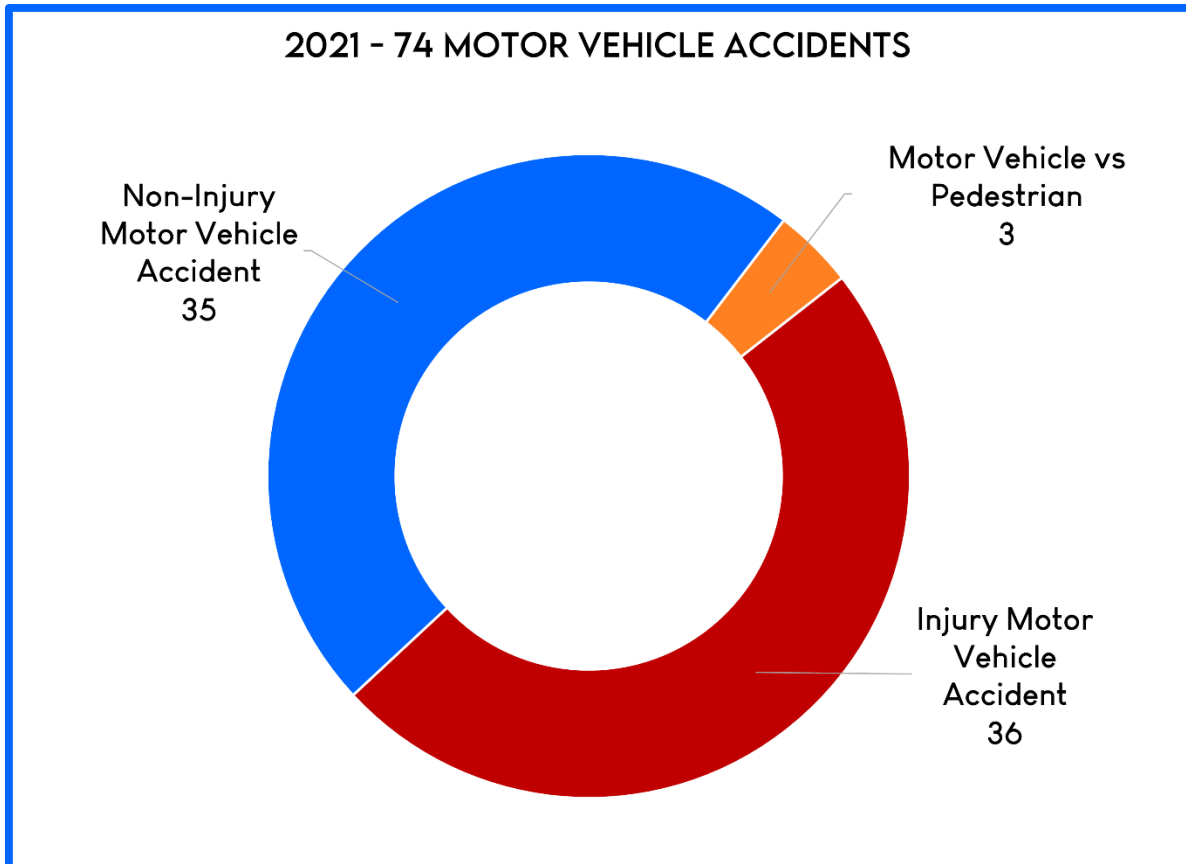




# OPERATIONS

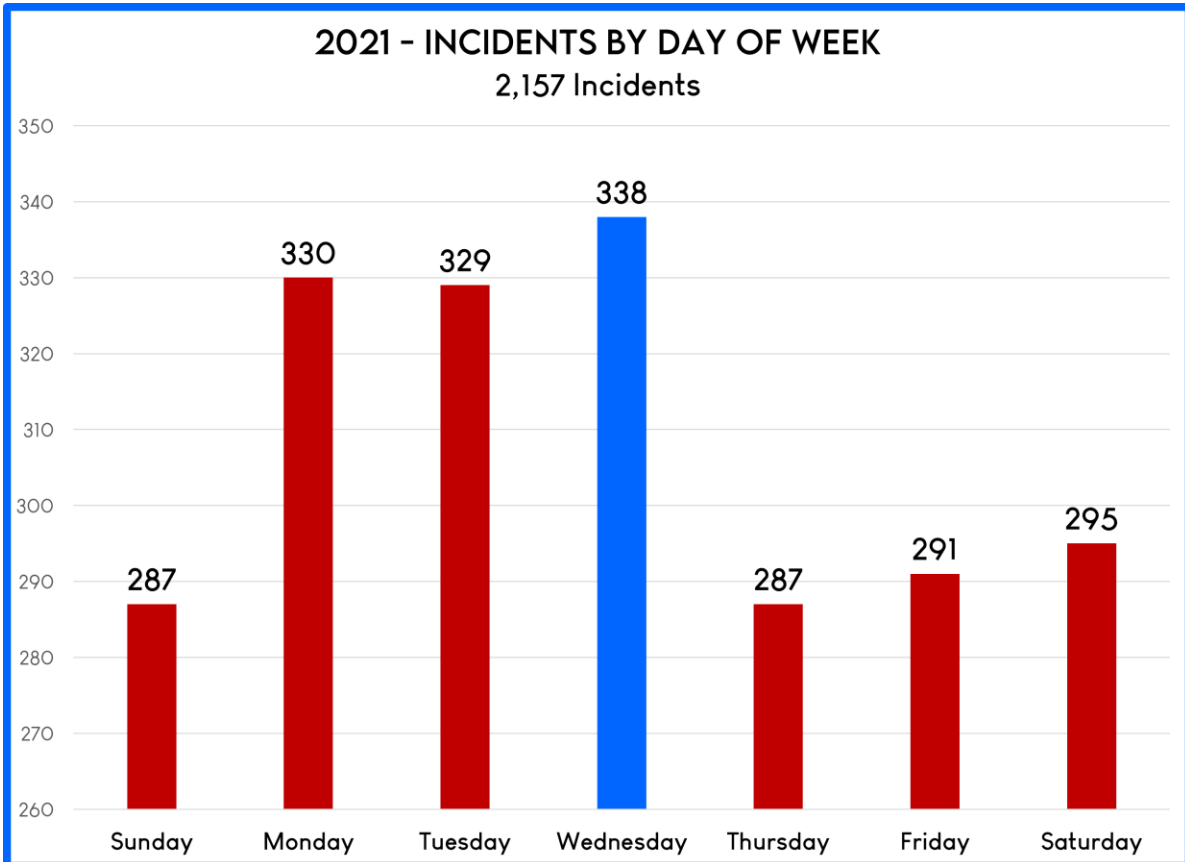
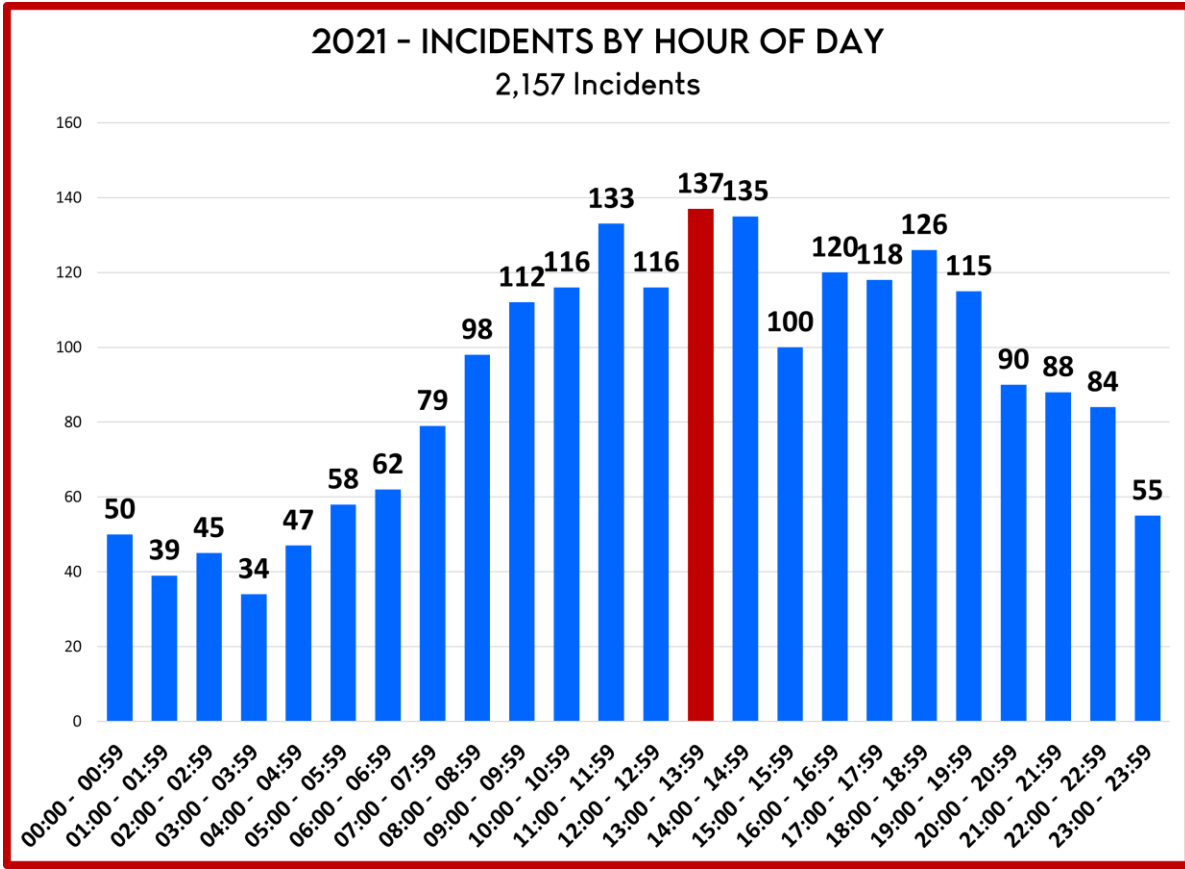


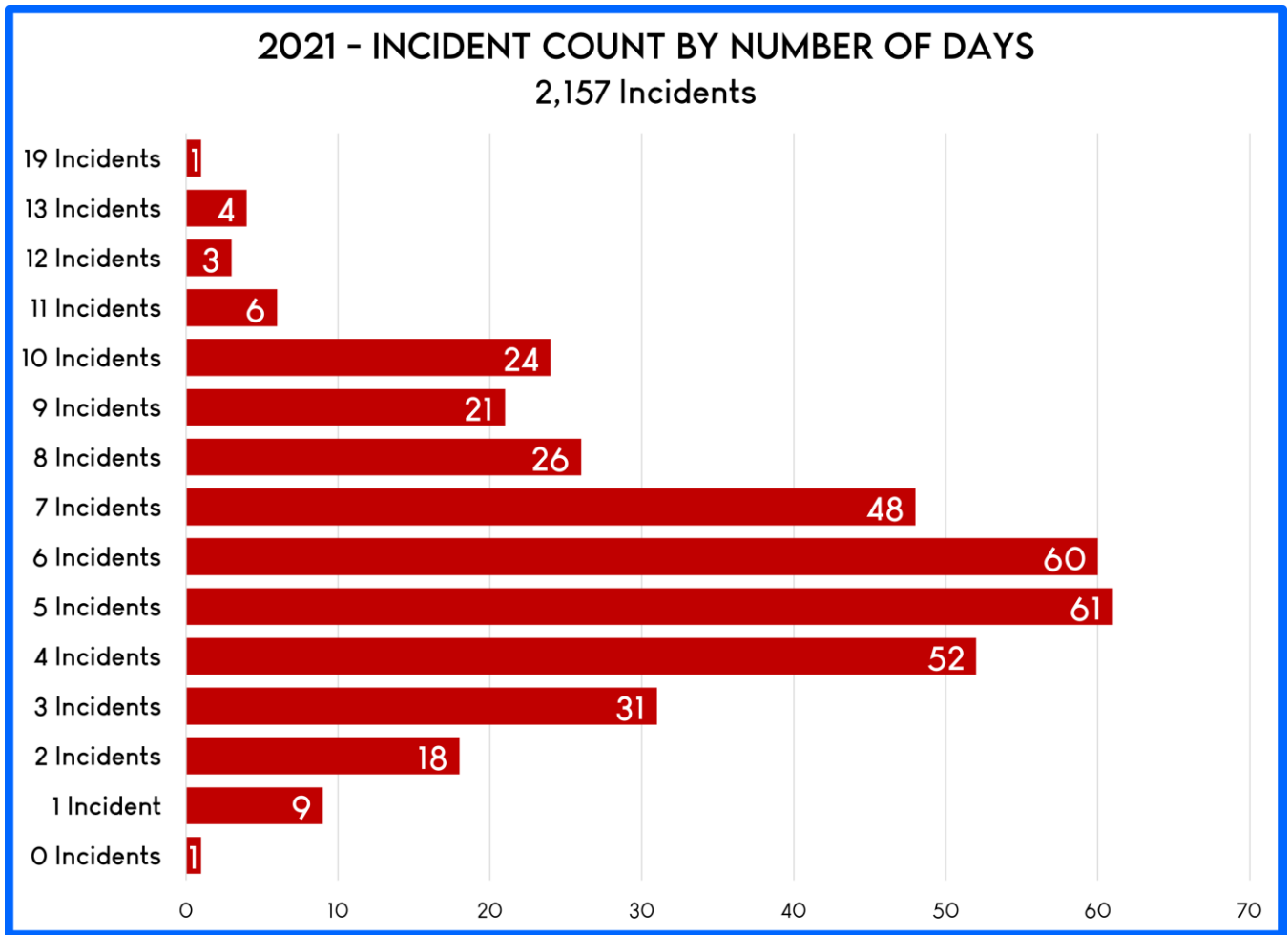


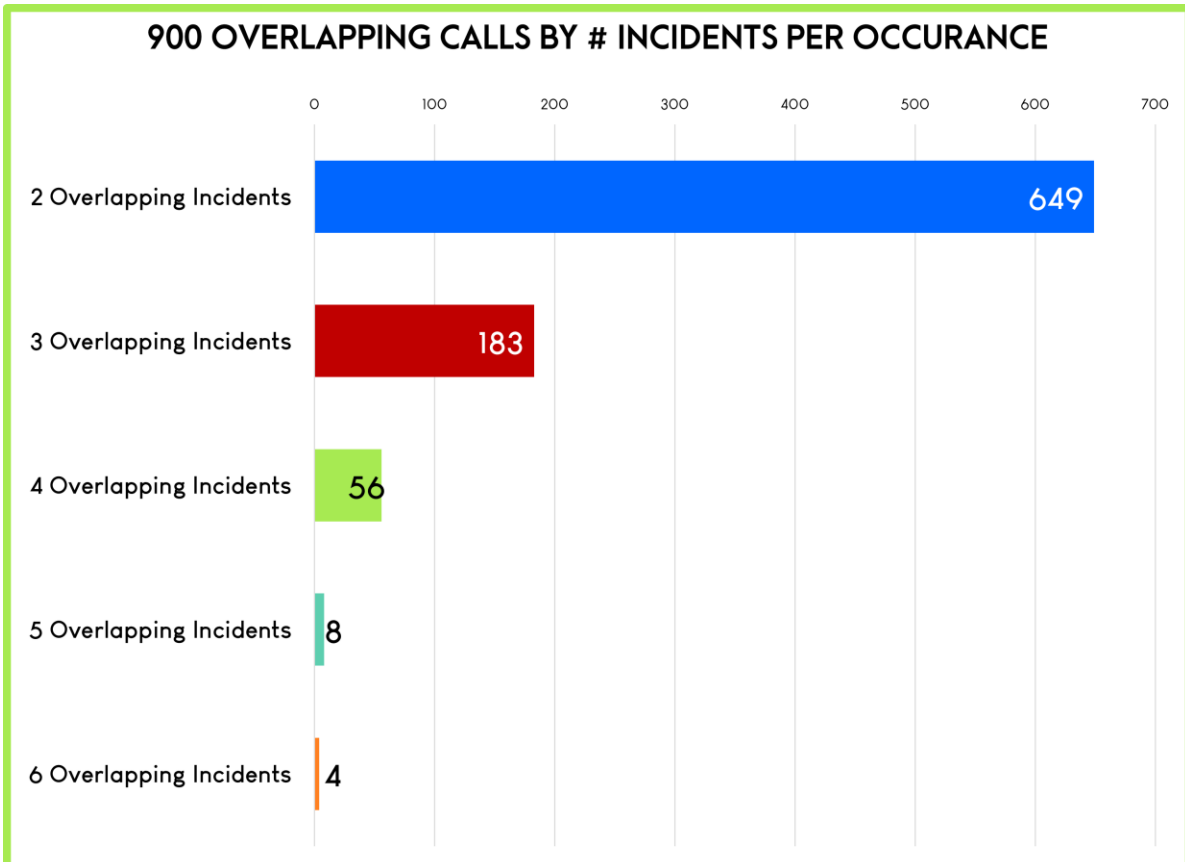
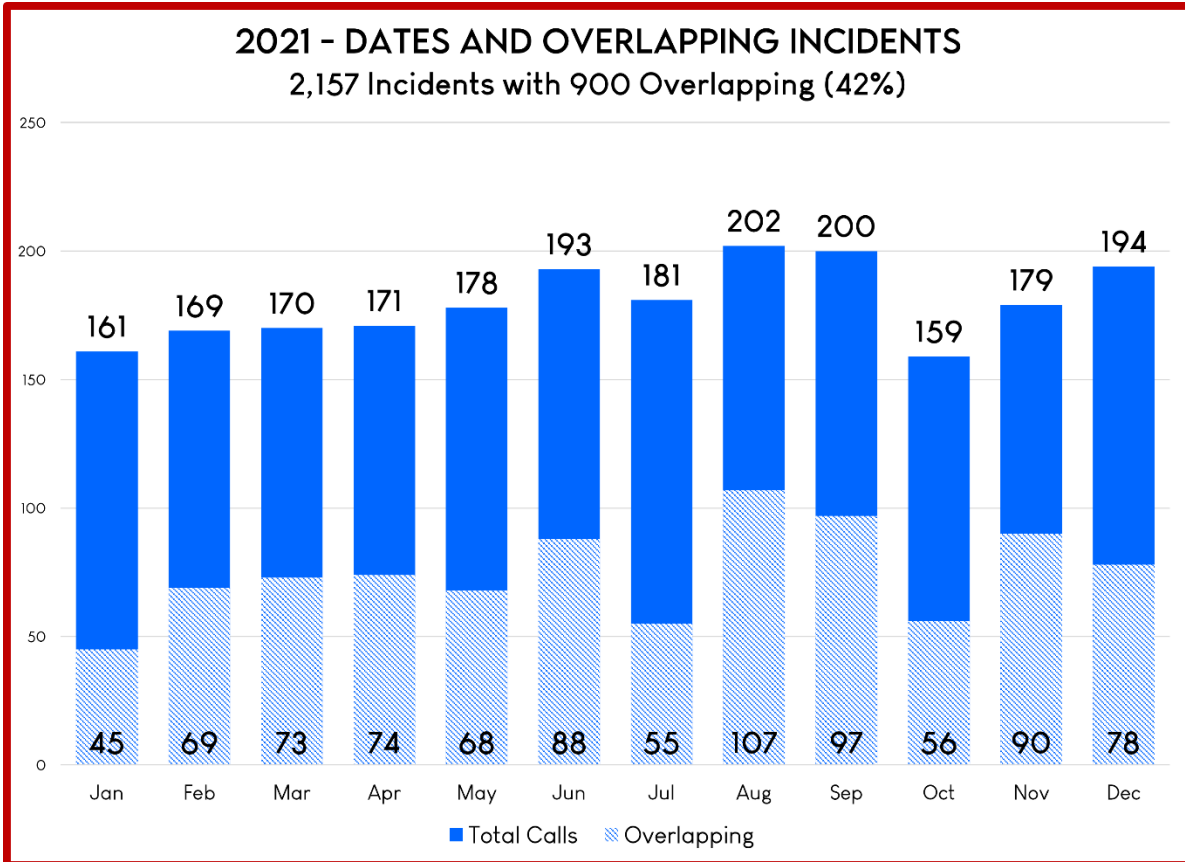


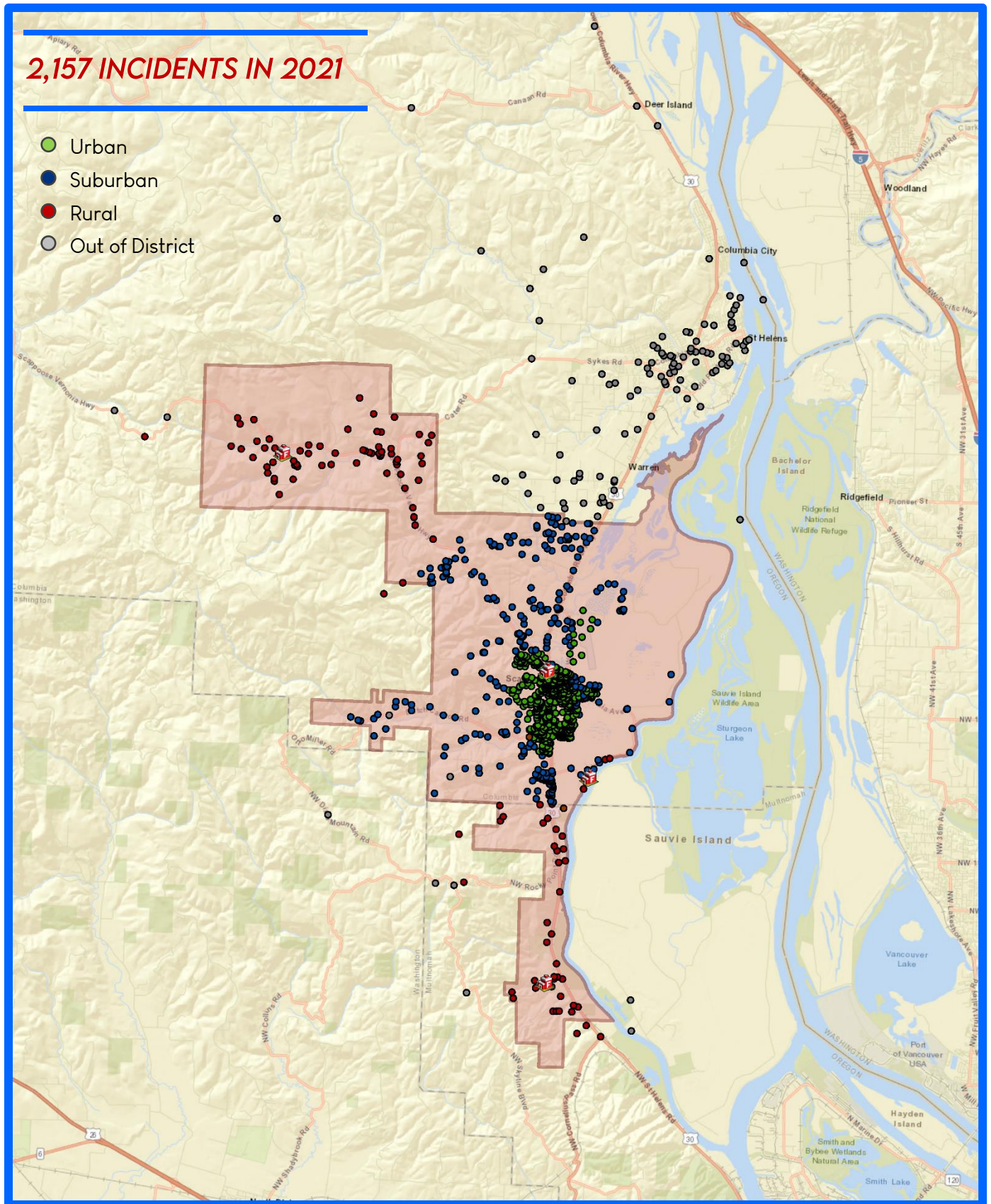


# OPERATIONS

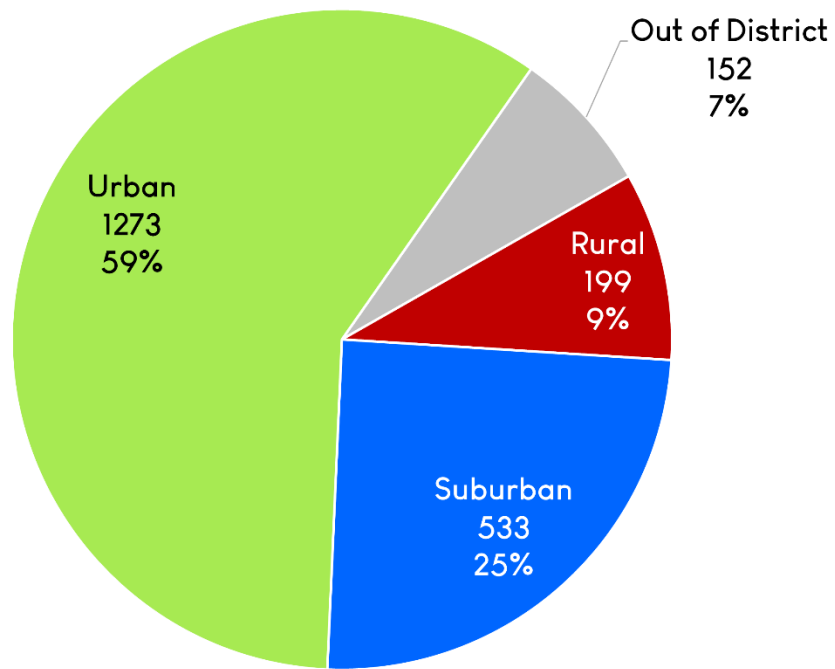




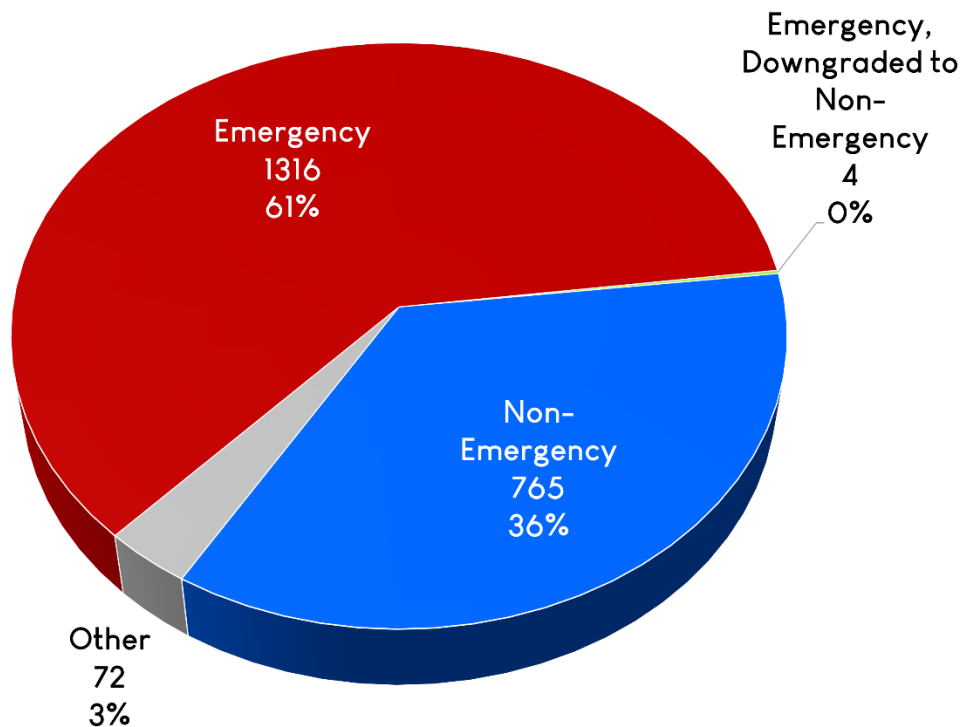




### 2021 - INCIDENTS BY LOCATION



### 2021 RESPONSE MODE TO SCENE



# OPERATIONS

DISTRICT GOALS				# INCIDENTS	DISTRICT	TARGET
TurnOut Time; Emergent; 75% Fractile	A Shift	B Shift	C Shift	All Calls		
BR431	7:41	1:24	0:00	18	6:04	≤ 2:00 Minutes
E431	4:35	4:00	4:23	186	4:20	≤ 2:00 Minutes
M430	2:09	2:12	1:55	229	2:09	≤ 2:00 Minutes
M431	3:14	3:21	3:07	792	3:12	≤ 2:00 Minutes
M432	3:06	3:13	3:12	158	3:12	≤ 2:00 Minutes
R431	4:41	3:22	6:18	35	5:45	≤ 2:00 Minutes
S431	5:35	4:43	4:58	586	5:00	≤ 2:00 Minutes

## KEY:

Meets Goal	Exceeds Goal by 1 minute or less	Exceeds Goal by more than 1 minute
---------------	-------------------------------------------	---------------------------------------------

# OPERATIONS

DISTRICT GOALS				# INCIDENTS	DISTRICT	TARGET
TurnOut Time; 0800 – 2000; Emergent; 75% Fractile	A Shift	B Shift	C Shift	All AM Calls		
BR431	7:18	1:24	0:00	11	5:55	≤ 2:00 Minutes
E431	3:33	3:19	3:35	125	3:33	≤ 2:00 Minutes
M430	2:09	2:11	1:54	225	2:08	≤ 2:00 Minutes
M431	2:26	2:21	2:35	455	2:31	≤ 2:00 Minutes
M432	2:32	2:49	2:53	114	2:49	≤ 2:00 Minutes
R431	4:41	7:04	5:01	25	5:23	≤ 2:00 Minutes
S431	4:14	3:58	4:22	389	4:09	≤ 2:00 Minutes

DISTRICT GOALS				# INCIDENTS	DISTRICT	TARGET
TurnOut Time; 2000 – 0800; Emergent; 75% Fractile	A Shift	B Shift	C Shift	All PM Calls		
BR431	7:41	1:46	0:01	7	3:33	≤ 2:00 Minutes
E431	4:55	5:34	5:41	61	5:09	≤ 2:00 Minutes
M430	-	2:10	2:56	4	2:57	≤ 2:00 Minutes
M431	3:59	3:52	4:01	337	3:58	≤ 2:00 Minutes
M432	4:23	3:57	4:20	44	4:21	≤ 2:00 Minutes
R431	-	5:03	11:24	10	7:56	≤ 2:00 Minutes
S431	6:44	5:48	6:01	198	6:15	≤ 2:00 Minutes

**KEY:**

Meets Goal	Exceeds Goal by 1 minute or less	Exceeds Goal by more than 1 minute
------------	----------------------------------	------------------------------------

# OPERATIONS

DISTRICT GOALS				# INCIDENTS	DISTRICT	TARGET
Response Time; First In; Emergent; 75% Fractile	A Shift	B Shift	C Shift	All Calls		
Urban	6:06	6:59	6:08	725	6:29	≤ 10:00 Minutes
Suburban	8:39	8:58	8:44	307	8:46	≤ 12:00 Minutes
Rural	13:35	14:35	13:39	106	13:49	≤ 30:00 Minutes

DISTRICT GOALS				# INCIDENTS	DISTRICT	TARGET
URBAN Response Time; First In; Emergent; 75% Fractile	A Shift	B Shift	C Shift	All Calls		
4302	-	2:54	2:53	3	2:57	≤10:00 Minutes
BR431	8:48	10:22	-	2	9:59	≤10:00 Minutes
E431	7:32	6:44	6:24	38	6:59	≤10:00 Minutes
M430	5:34	6:43	5:55	124	5:55	≤10:00 Minutes
M431	6:26	6:51	6:05	450	6:28	≤10:00 Minutes
M432	6:37	7:33	6:17	85	7:17	≤10:00 Minutes
S431	6:05	7:15	7:36	20	7:11	≤10:00 Minutes

## KEY:

Meets Goal	Exceeds Goal by 1 minute or less	Exceeds Goal by more than 1 minute
------------	----------------------------------	------------------------------------



# OPERATIONS

DISTRICT GOALS				# INCIDENTS	DISTRICT	TARGET
SUBURBAN Response Time; First In; Emergent; 75% Fractile	A Shift	B Shift	C Shift	All Calls		
BR431	20:31	4:38	-	2	16:33	≤12:00 Minutes
C43			11:15	2	11:15	≤12:00 Minutes
E431	7:24	10:39	11:02	26	9:52	≤ 12:00 Minutes
M430	7:47	8:18	5:53	52	6:59	≤ 12:00 Minutes
M431	8:51	8:37	8:35	186	8:45	≤ 12:00 Minutes
M432	7:26	9:00	7:48	24	7:52	≤ 12:00 Minutes
S431	10:46	9:00	9:12	13	9:32	≤ 12:00 Minutes

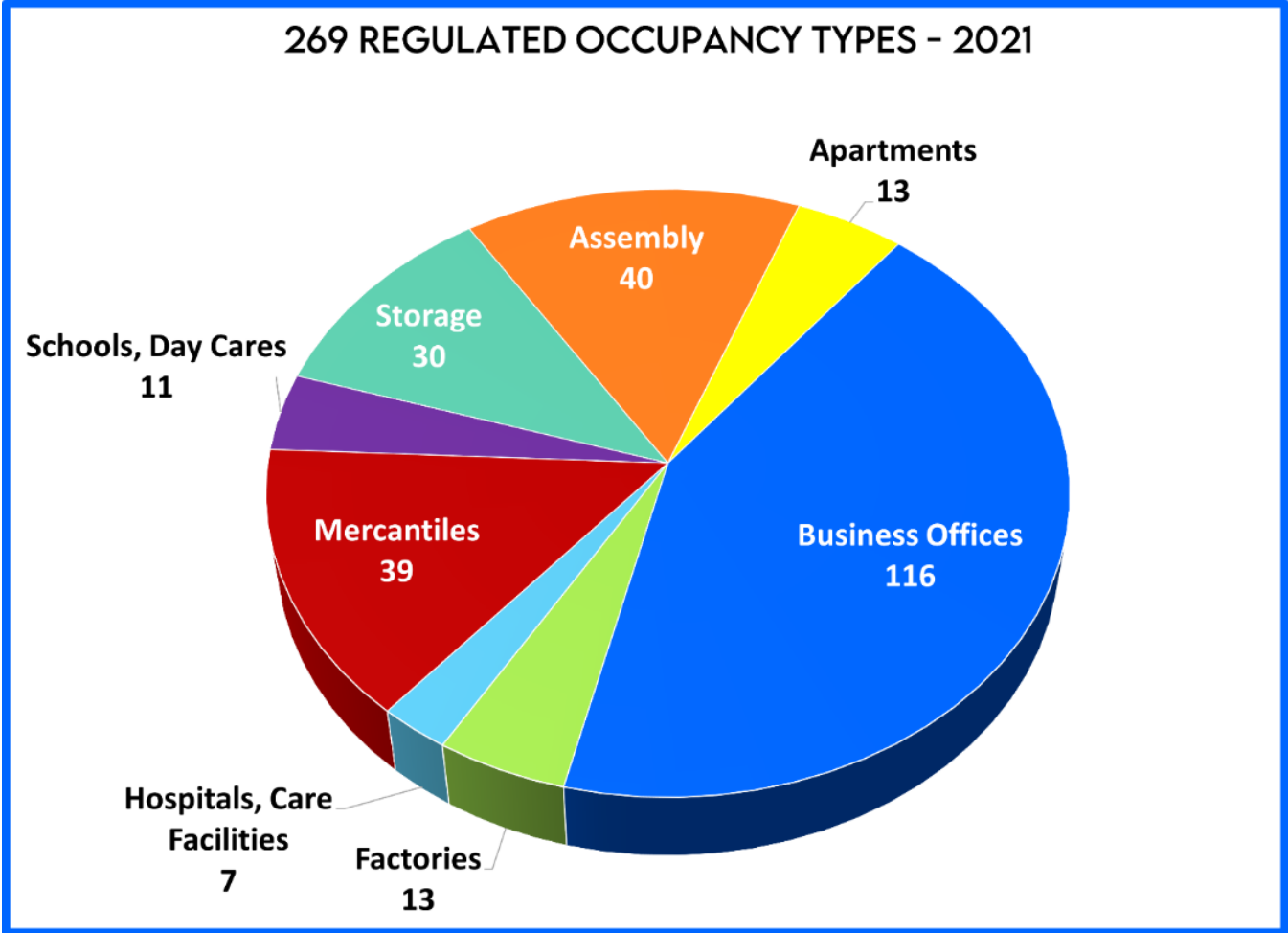
  

DISTRICT GOALS				# INCIDENTS	DISTRICT	TARGET
RURAL Response Time; First In; Emergent; 75% Fractile	A Shift	B Shift	C Shift	All Calls		
BR431	1:37:47	-	-	1	1:37:47	≤ 30:00 Minutes
E431		13:49	12:20	8	13:21	≤ 30:00 Minutes
M430	12:31	12:47	13:11	16	13:11	≤ 30:00 Minutes
M431	14:45	14:35	13:39	58	14:21	≤ 30:00 Minutes
M432	11:19	11:55	14:14	13	12:04	≤ 30:00 Minutes
S431	7:46	16:40	10:28	7	12:17	≤ 30:00 Minutes

**KEY:**

Meets Goal	Exceeds Goal by 1 minute or less	Exceeds Goal by more than 1 minute
------------	----------------------------------	------------------------------------

# OCCUPANCY PROFILE



# OCCUPANCY PROFILE

